



Downtown Campus Hotel Properties Executive Project Summary



Project Summary Content

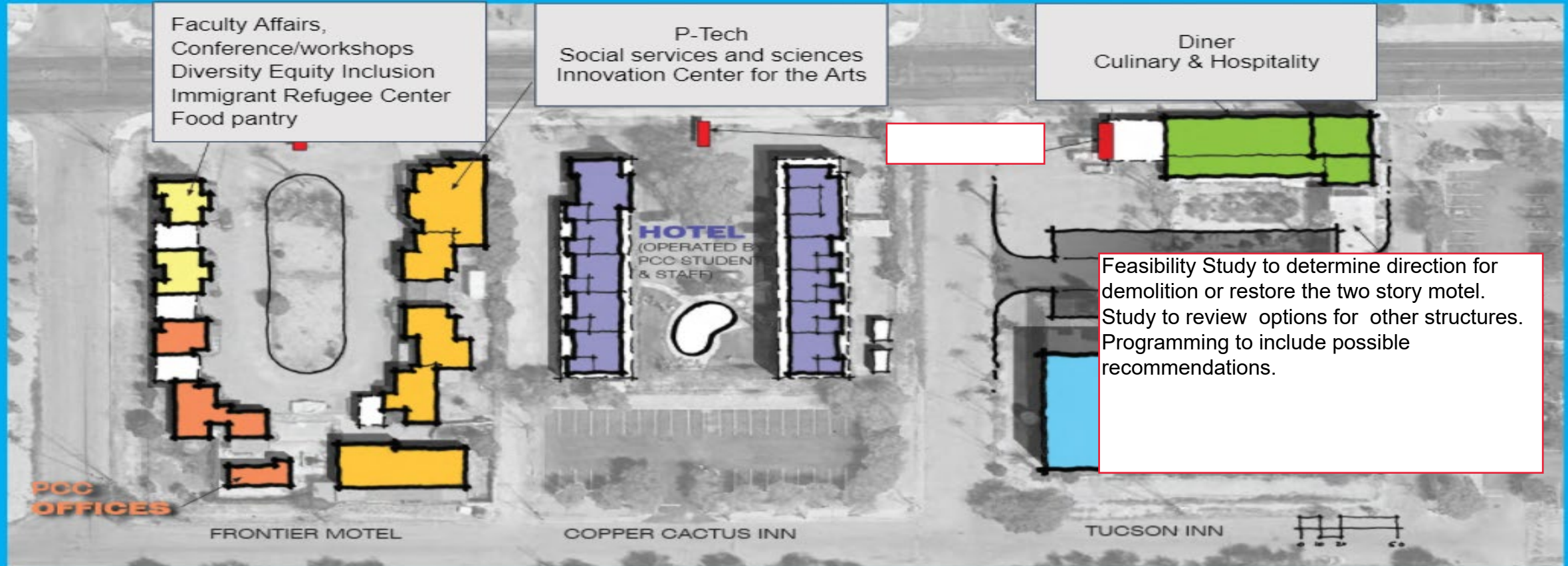
- Downtown Campus Overview
- Programmatic Summary
- Hotel Properties - Site and Square Feet Summary
- PCC Development

Downtown Campus Overview

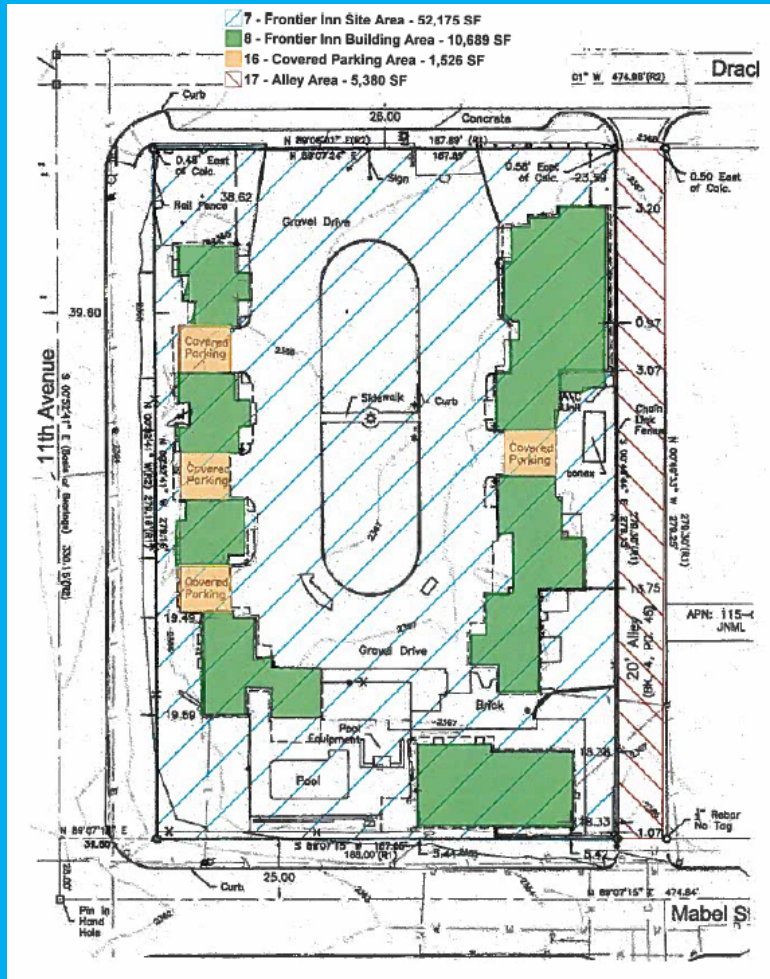


 <p>Diversity, Equity and Inclusion (IRSRC)</p>	 <p>Dual Enrollment</p>	 <p>Consolidated Student Enrollment Center</p>
<ul style="list-style-type: none"> Establish a Diversity, Equity and Inclusion, Immigrant and Refugee Student Resource Center (IRSRC) with space for the Ethnic, Gender, and Transborder Studies program 	<ul style="list-style-type: none"> Include space for an early college high school for up to 250 students, with a CTE focus 	<ul style="list-style-type: none"> Include Pima County One-Stop
 <p>District Office</p>	 <p>Teaching and Learning Center</p>	 <p>Social Services</p>
<ul style="list-style-type: none"> Explore the relocation of District Office's administrative offices Best if located adjacent to the campus 	<ul style="list-style-type: none"> Expand the Teaching and Learning Center / Faculty Resource Center satellite location Maintain program home on West Campus 	<ul style="list-style-type: none"> Expand Social Services programs (food pantry and clothes closet) with wraparound services Consider experiential learning for students

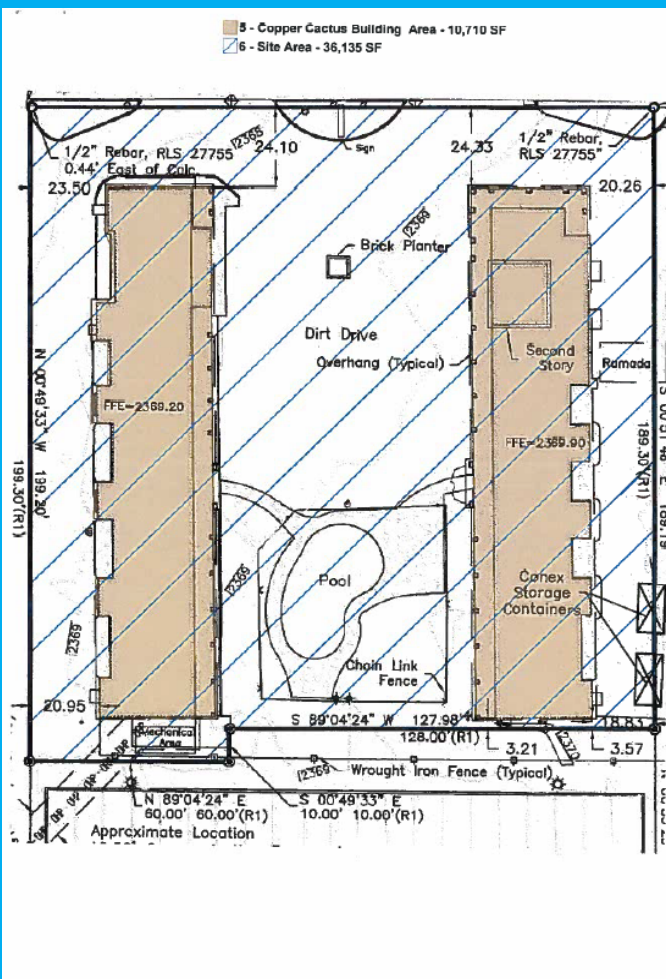
Programmatic Recommendations



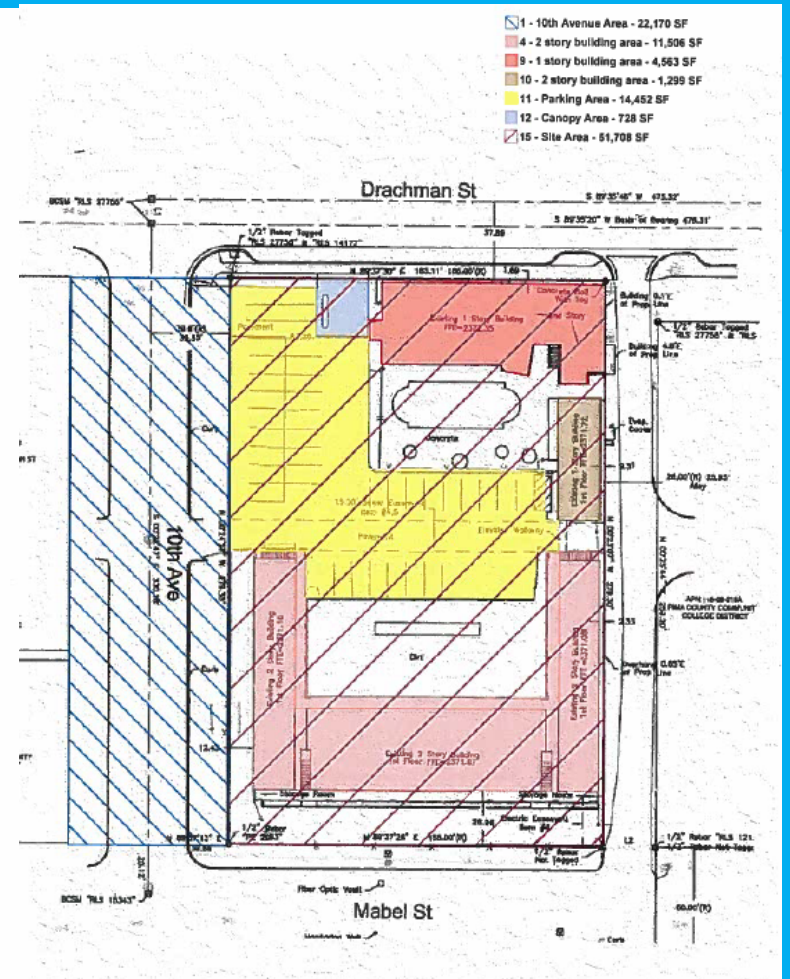
Hotel Properties Site and S.F. Summary



Frontier Motel



Copper Cactus Inn



Tucson Inn

PCC Project Summary



Project Summary

Restore Tucson Inn Cafe - Front Portion

Feasibility Study to either:

1. Demolish two story motel- back portion.
2. Restore for adaptive reuse/hotel use

Restore Copper Cactus Inn

Restore Frontier Motel

Additional development options to be considered - for parking or new building construction.

Project Budget Range :
\$8,300,000 to \$14,583,865